

## How to install foam gasket to the fan cage panel of a Sensor

### Environment

McAfee Network Security Sensors NS9500

### Problem

Sensor reboots because of fan failure.

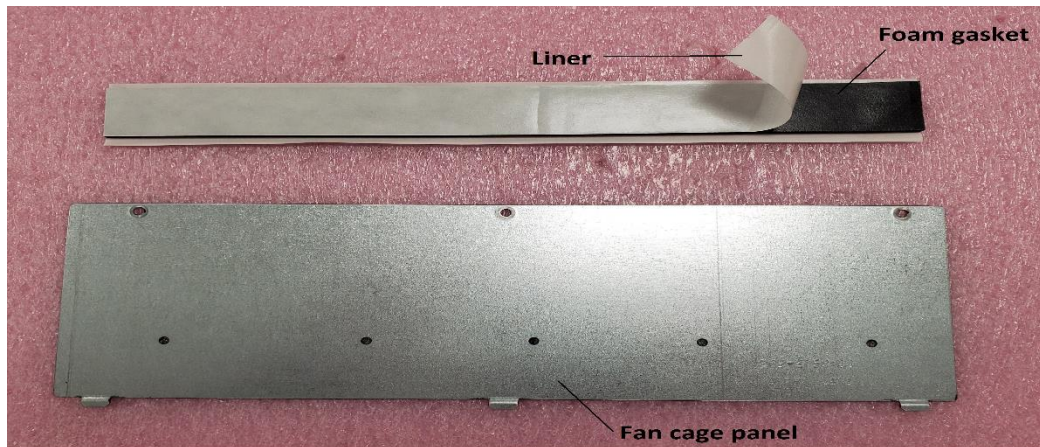
### Solution

McAfee recommends you install a foam gasket to the fan cage panel of the Sensor to ensure good fan connections. Installing a foam gasket reduces occurrences of fan failure in the Sensor. This document describes the steps to install a foam gasket to the fan cage panel of the Sensor.

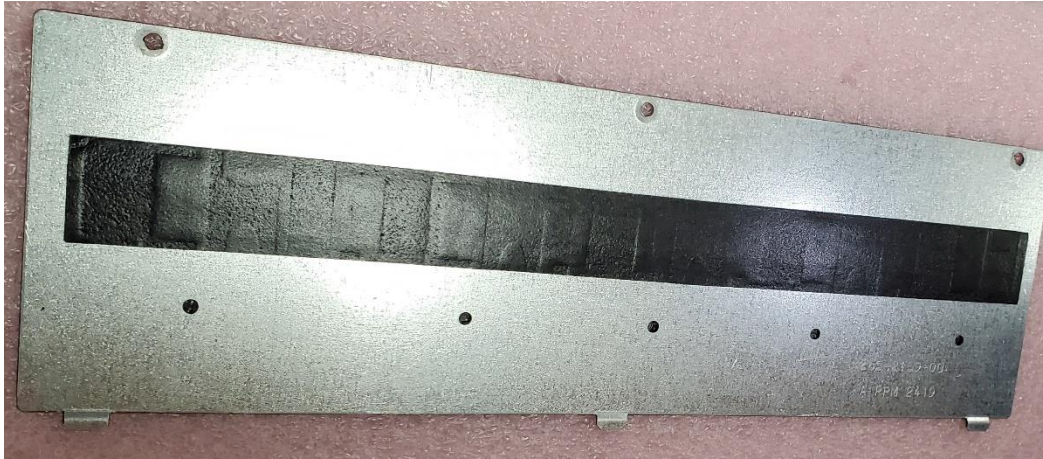
**Note:** NS9500 Sensors shipped after 20 February 2020 have the foam gasket pre-installed to the fan cage panel.

### Procedure

1. Unscrew the fan cage panel from the Sensor.
2. Remove the liner of the foam gasket.



3. Attach the foam gasket to inner side of the fan cage panel.



4. Secure the fan cage panel by using the screws removed in Step 1.

